

digital transformation era

# **CrewLifeSimple**

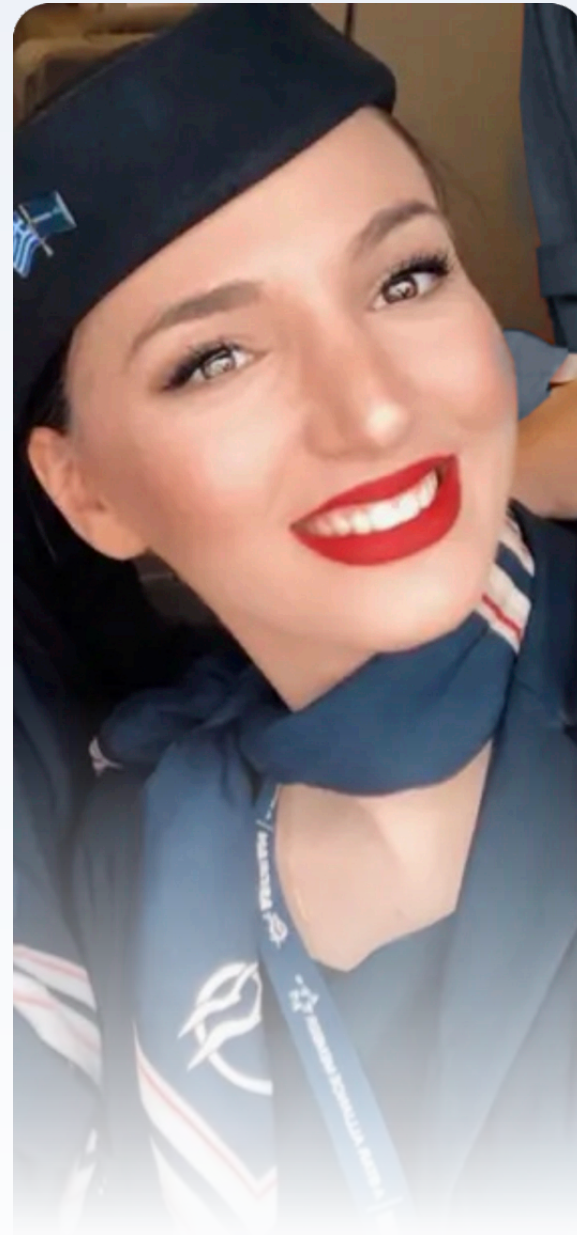
## **CLS TRAINING MANAGEMENT SYSTEM**

# CLS TRAINING MANAGEMENT SYSTEM

- › Syllabi & Courses Creation
- › Digitalized Record Keeping & History
  - Business Intelligence
  - Data Analytics
  - Custom Reports
  - Support for: AQP | ATQP | EBT
- › Automated Scheduling of Instructors & Trainees

Integrates with your  
Rostering System for

- Scheduling of Instructors & Trainees
- Qualification Details



CURRENT IMPLEMENTATIONS  
(Integrations with AIMS Rostering System)

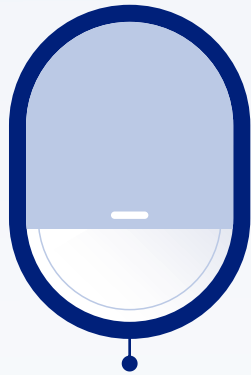


# HIGHLIGHTS

Easy to use  
web application  
available  
online & offline



Accommodates both  
Flight Crew &  
Cabin Crew  
training



Customizable  
courses &  
syllabi



Multiple grading  
options

- Competences & Observable Behaviors
- 1 to 5
- Pass, Fail, Pass with Training Recommendation



Course &  
candidate  
progress  
tracking



# KEY BENEFITS



Simplified and hassle-free training solution that aims to achieve both administrative efficiency and enhanced User Experience



Paperless process that annihilates storage costs



Real-time monitoring of the processes



Digital records and BI dashboards that allow the airline to extract valuable insights, enabling smooth and valid Competency and Evidence Based Training



Elimination of errors



Time & money savings



# WHO WE ARE

Strategic partner of  
**AEGEAN** 

MORE THAN SMART AVIATION SOFTWARE



Gold  
Microsoft Partner  
Application Development  


Crew Life Simple (CLS) Suite

Passenger Disruption  
Management

Cabin  
Application

Codeshare  
Management

Training  
Management

Engine  
Inspection  
Management

Custom Software  
Solutions

Infrastructure  
Management

Operational  
Reporting  
Management

Software  
Testing

Business  
Intelligence

Uniform  
Management

Business  
Function  
Specific  
Solutions

Artificial  
Intelligence  
& Machine  
Learning

Crew Meal  
Management



Advanced Technology  
Solutions & Services

**20+** years

iteam.gr

info@avibright.com

avibright.com